

**EASY.
ONE-DAY & YOU'RE READY!**



**DRYWALL
SYSTEM**



4 STEPS IN 1 DAY AND READY!



BOND



LEVEL



FILL



FINISH

FAST & PRO PROGRAM

FAST CONSTRUCTION FOR PROFESSIONALS



**FAST
& PRO**

WWW.TYTAN.PL

FAST&PRO is an endorsement granted to a premium product line creating significant added value for End Users through:



INCREASED **SPEED** AND SIGNIFICANT AND MEASURABLE **SAVINGS**

- + Through reduction of working hours, non-necessary steps, waiting times or visits to construction work
- + Higher yield
- + Multi materials, universal products



BETTER **APPLICATION EXPERIENCE**

- + Light weight
- + Ready to apply
- + Dust free solutions (vs mortar bags)



HIGH **QUALITY**, REALIABLE AND DURABLE **FINISHING**

- + Premium quality product
- + Easy , error-free application.

We believe that the **Drywall System** fits perfectly into the idea of **Fast Construction for Professionals**. It is a high-quality ready-to-use solution that speeds up and facilitates work, is ecological (saves water and electricity) and does not create a mess. **It's simply FAST & PRO!**

**+ SPEEDS UP BUILDING + DELIVERS HIGH QUALITY
+ REDUCES THE LABOUR COST**

TABLE OF CONTENTS



DRYWALL SYSTEM Introduction	4
SYSTEM IN A NUTSHELL	5
STEP 1 - BONDING	6
STEP 2 - LEVELING	14
STEP 3 - FILLING	17
STEP 4 - FINISHING	19
DRYWALL SYSTEM vs STANDARD SOLUTIONS	21
Frequent and common mistakes and how to avoid them	22

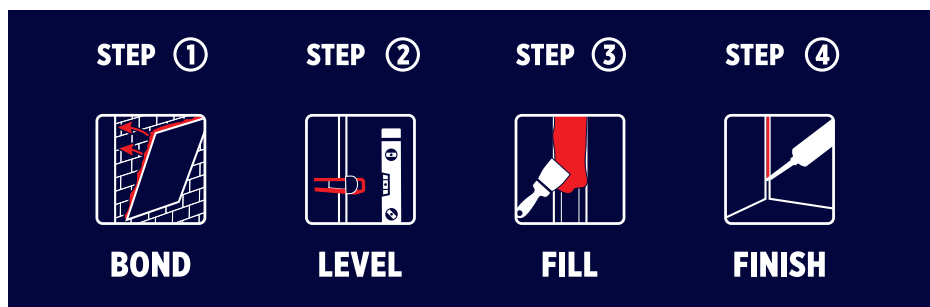


Dear Professional User!

We put in your hands a guide to the world of fast, simple and extremely precise drywall installation. We called it **DRYWALL SYSTEM**, because this solution is so simple and User-friendly.

DRYWALL SYSTEM is a system that allows you to quickly, easily and precisely carry out the process of leveling walls with plasterboards.

4 SIMPLE STEPS are enough and the whole process can be closed **within 1 DAY!**



AND YOU'RE READY!

Drywall installation process is usually a very laborious stage of interior finishing, which requires long preparation (proper mixing and liquefaction of the gypsum adhesive), coordinated work of several people (when leveling the boards) and also generates the need for frequent corrections (resulting from uneven boards, cracking putties and warping joints). **DRYWALL SYSTEM** by TYTAN PROFESSIONAL eliminates these problems and allows you to carry out work with drywall construction **from A to Z**: from bonding through leveling to finishing.

No more time-consuming mixing of the adhesive, waiting for it to dry, requiring accurate alignment of the boards with a spirit level.

DRYWALL SYSTEM is a complex solution for Professionals.

Therefore, Dear Professional, we invite you to familiarize yourself with **4 simple steps** that will change the way you work forever.

SYSTEM IN THE NUTSHELL

THE DRYWALL SYSTEM CONSISTS OF 4 SIMPLE STEPS OF DRYWALL INSTALLATION WITH THE USE OF SPECIALLY DESIGNED PRODUCTS UNDER ONE BRAND

4 STEPS **IN 1 DAY** AND READY!

FOAM ADHESIVE FOR DRYWALL



Fast - up to 100 m² in 1 hour



Finishing steps just after 30 minutes



No dust, water, electricity



STEP ① BOND



DRYWALL POSITIONING KIT



Easy positioning of drywall



Even joint along the entire length



High precision for smooth surface



STEP ② LEVEL



JOINT FILLING PUTTY FOR DRYWALL



Ready to use



Reinforced with microfibers



No cracks



STEP ③ FILL



DRYWALL ACRYLIC



High elasticity



Perfect for corners



No cracks



STEP ④ FINISH



STEP ①

BONDING



FOAM ADHESIVE FOR DRYWALL



The first step in the drywall installation process is bonding the board to the bonded surface. Traditionally, for this purpose, gypsum powder-based adhesive is used, which must be mixed with water using an electrically powered mixer. Later, the adhesive must dry normally from 24 to 72 hours before proceeding to the next stages of processing: putting, smoothing and painting.

In our **DRYWALL SYSTEM** we offer an alternative to traditional bonding: Foam Adhesive dedicated to drywall. It is a **fast, convenient** and **reliable** solution.

MAIN BENEFITS OF THE FOAM ADHESIVE FOR DRYWALL



THE SPEED
OF BONDING
UP TO 100 M²
IN 1 HOUR



WORK SPEED
NEXT STAGES
OF INSTALLATION
JUST AFTER 30 MIN



CONVENIENCE OF
WORK
NO DUST, WATER
AND ELECTRICITY



IMPORTANT!

Thanks to this product, you can very quickly proceed to the next stages of work: putting, smoothing and painting. The foam adhesive allows the drywall to be processed after **30 minutes from bonding**. Working in a team, you are able to bond and process boards at the same time! This is why you are able to close all drywall installation steps within **1 DAY!**

Additionally, you can apply it on drywall leaning against the wall, which is hard to do with gypsum powder-based adhesives – so it will work great when installing large-format boards in small rooms. The additional advantage is the possibility of correcting boards on walls with unevenness **up to 20mm**.

ADDITIONAL BENEFITS OF THE FOAM ADHESIVE FOR DRYWALL



CORRECTION OF
WALLS UNEVEN
UP TO 20 MM



NO POST-
EXPANSION



NON
FLAMMABILITY
CLASSIFICATION
B-s2, d0

STEP ① OF 4 - BONDING



DID YOU KNOW THAT...

Thanks to the unique foam adhesive technology, you can level walls in old rooms that require renovation without much effort? Walls do not require much processing such as hacking off old plaster or tiles ... Now you can bond drywall directly to old tiles!

IT'S FAST AND SIMPLE!

TYPICAL SURFACES TO WHICH YOU CAN BOND TO:



Silicate bricks



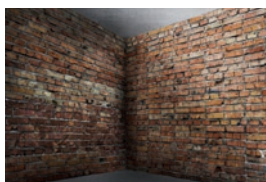
Wooden structures and walls



Concrete walls



Aerated blocks



Old uneven walls



Bonding directly to old tiles

TECHNICAL PARAMETERS OF FOAM ADHESIVE FOR DRYWALL

Color	green
Yield in the coverage area	10 m ²
Yield	34-36 rm
Full curing time	2 h
Open time	≤ 1,5 min
Correction time	≤ 5 min
Processing after bonding: puttying, smoothing, painting	possible after 30 minutes
Application temperature	+5°C - +30°C
Can temperature	+10°C - +30°C
Thermal resistance after cured	-60°C - +100°C
Non flammability classification	B-s2, d0 according to norm PN - EN 13501 - 1:2008

STEP ① OF 4 - BONDING

FOAM ADHESIVE FOR DRYWALL VS TRADITIONAL TECHNOLOGY

FOAM ADHESIVE FOR DRYWALL	STANDARD POWDER-BASED ADHESIVE
---------------------------	--------------------------------



1 CAN = 10 M²



1 CAN OF FOAM ADHESIVE = 40 KG
OF STANDARD POWDER-BASED ADHESIVE

PRODUCT PREPARATION



30 SECONDS



10 MINUTES

WORKING TIME



60 SECONDS



5 MINUTES

JOINT FILLING PUTTY APPLICATION



AFTER
30 MINUTES



AFTER
24-72 HOURS

TRANSPORTATION



1 BOX IS 12 CANS = 12 KG



12 BAGS OF
POWDER-BASED ADHESIVE = 300 KG

ADDITIONAL UTILITIES NEEDED



ELECTRICITY, WATER AND A MIXER
ARE A MUST

STEP ① OF 4 - BONDING

Before bonding, always make sure that the surface is well prepared. Clean it and preferably prime it. Then you can go ahead with drywall bonding. Remember that using the foam adhesive is easy, fast and convenient!

Now we show you how to properly take the first step in our one-day simple system.

So here we go! STEP 1 - BONDING

SURFACE PREPARATION



For the best and durable results, please make sure the surface is well prepared for work. First make sure the surface is solid and stable.

The substrate must be clean, dust-free and free from loose elements. Dust and loose parts can be removed mechanically (e.g. with a brush) or with compressed air.

Any remains of the previously used adhesive must also be removed prior to application of the adhesive to the drywall.

For even better grip, we have created special primers for every need. We recommend using them before each stage of bonding works.



TIP: Remember!

Always take care of the surface preparation before bonding. It may seem insignificant, but proper substrate preparation is essential to achieve the proper final adhesive strength.



TIP: Increase your grip!

The surfaces can be different: porous, non-porous, dusty, greasy, oily. It can be difficult to clean them completely. Therefore, it is always better to prime the surface before bonding.

STEP ① OF 4 - BONDING

PRIMER PREPARATION



Use a 2:1 ratio of a primer diluted with water, mixing them in a separate, dedicated container



Apply the primer along the wall with a roller or brush



CONTACT PREMIUM is a ready-to-use binding primer based on acrylic dispersion with the addition of quartz aggregate. Increases roughness of the substrate and strengthens and improves the adhesion of layers. In the case of mixed substrates, it evens out and regulates their absorbency. It is used for renovations without the need to remove the old substrate - in particular when laying ceramic and porcelain tiles on old ceramic or stone cladding and with heated floors.



DEEP PENETRATING PRIMER - EMULSION
Acrylic fine-grained priming emulsion designed for priming absorbent and porous surfaces, both inside and outside. The primer is characterized by the ability to deeply penetrate the substrate, and when added to joints and adhesive mortars, it protects them against cracking.



GROUND - PRIMING EMULSION
Universal priming emulsion for absorbent and porous surfaces for indoors and outdoors usage. When added to adhesive mortars, it protects them against cracking.

STEP ① OF 4 - BONDING

FOAM ADHESIVE PREPARATION



Use a long spirit level to check the evenness of the surface



Shake the can firmly for 30 seconds



Screw the can to the gun



You are ready to go!



DID YOU KNOW THAT...

You will also find professional foam guns in our offer?

SCAN THE CODE TO LEARN MORE!



STEP ① OF 4 - BONDING

FOAM ADHESIVE APPLICATION



Use this QR code to see the video instruction:



First make sure that the bonding surfaces are even. Follow the surface preparation instructions for a strong and durable bond

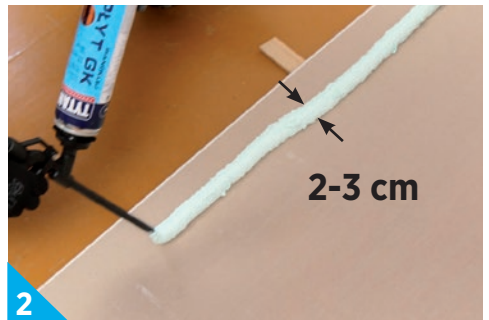


1

Before bonding, place a piece of drywall on the bottom of the wall as a spacer

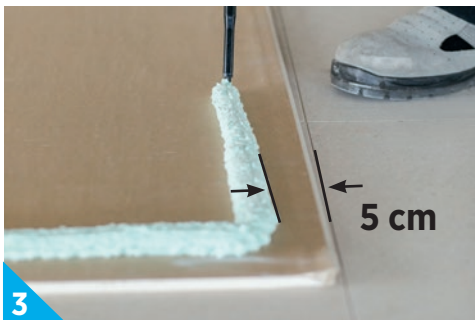


TIP: leave some space between the adhesive beads for air to escape. This will provide better tightness of the board to the wall



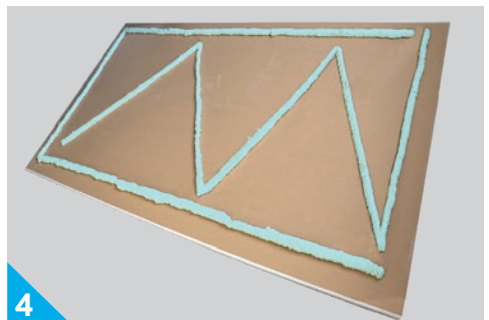
2

Apply 2-3 cm wide beads of foam adhesive around the perimeter of the board



3

Keep a distance of 5 cm from the edge so that the adhesive does not leak out of the board when joining it with the surface



4

Apply a zigzag pattern of adhesive starting from one of the corners of the drywall

STEP ① OF 4 - BONDING

DRYWALL BONDING



After applying the adhesive, bond the board to the substrate, carefully pressing it against the wall



TIP: After using the foam adhesive, clean the gun using a dedicated professional product - Tytan Professional Cleaner



Use a long spirit level to position the first board. This should be done 2 to 5 minutes after applying the foam adhesive

STEP ②

LEVELING



DRYWALL POSITIONING KIT



The first set of positioners of this type for plasterboards was designed to speed up and facilitate drywall-related works.

You probably know the problems and difficulties associated with setting up drywall yourself. A small room, large boards, you work alone. You bond the board and this is where the biggest challenge comes - catching the perfect gap between the boards and perfectly aligning them with each other.

At the moment, the market does not offer simple, user-friendly solutions that would allow you to easily bond the boards yourself and easily create perfectly even surfaces.

Our proposal was created in cooperation with drywall professionals, so we understand the problems in your daily works.

Meet the precise drywall clips and wedges kit.

The clips are designed in such a way that they can be easily hooked to the edge of the plate, and by placing a second plate next to it, the thickness of the clips will create a perfect, equal along the entire length joint between the boards. On the other hand, the wedges that you attach to the clips make the boards perfectly self-leveling to each other, so you do not have to work with a spirit level.

It's simple, isn't it?

We invite you to the world of perfectly even walls. **STEP 2 – LEVELING**

MAIN BENEFITS OF THE DRYWALL POSITIONING KIT



**EASY TO WORK
WITH.
HIGH PRECISION**

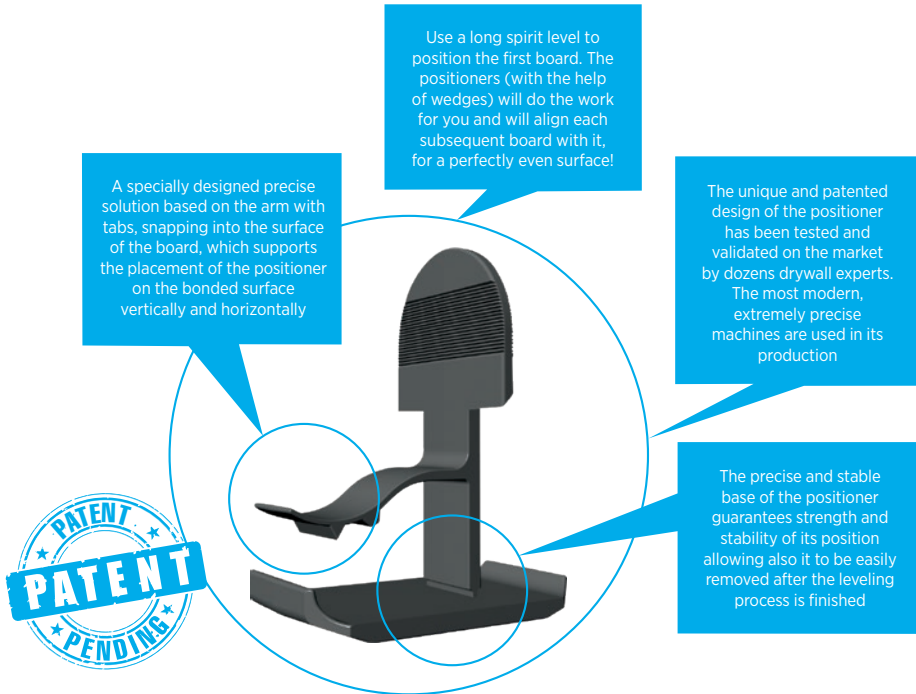


**EVEN JOINT
ALONG THE ENTIRE
LENGTH**

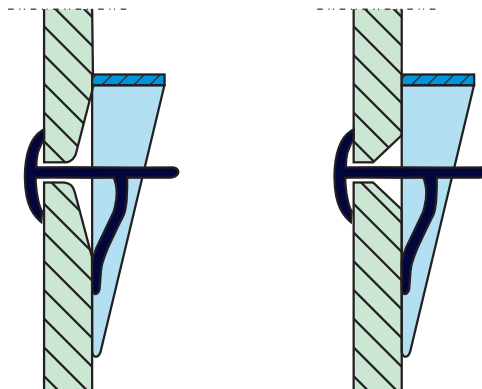


**HIGH PRECISION
FOR SMOOTH
SURFACE**

STEP ② OF 4 - LEVELING



CORRECT POSITIONING OF THE CLIPS DEPENDING ON THE TYPE OF DRYWALL EDGES



Please note that our Drywall Positioning Kit works with two boards with the same original edges

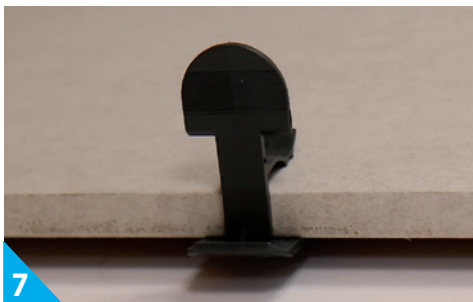
For boards with different edges, trim the edges of both boards at a 45-degree angle

STEP ② OF 4 - LEVELING

FAST & EASY LEVELING PROCESS



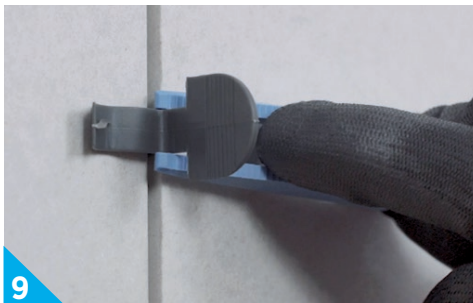
TIP: Did you know that you can use positioners not only vertically but also horizontally?



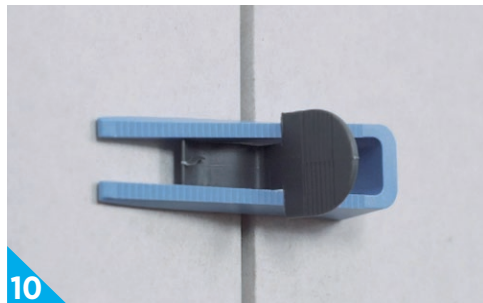
Hook the clip into the side of the board.
Use a min of 3 clips along the entire length of it



As you can see, you can use positioners in different positions, which is useful for boards cut to size



After bonding the second board, insert the wedge into the clip, which will allow the boards to self-level against each other



Self-leveling in action! Now you can bond more boards in the room and come back here in 30 minutes



After the boards are level (approx. 30 minutes), the clips and wedges can be removed with a hammer. Wedges can be used again!

WITH SUCH AN EVEN SURFACE, YOU CAN NOW QUICKLY START THE FINISHING PHASE!

STEP ③ FILLING



JOINT FILLING PUTTY FOR DRYWALL



The two most important and fastest **STEPS** are behind us, so it's time to start processing the boards.

Let us remind you: thanks to the use of foam adhesive and its fast drying, as well as positioners, we can start putting joints on the same day. Working in a team, one person is able to bond the rest of the remaining drywall, while the other person can simultaneously finish off the bonded ones.

This is where the DRYWALL SYSTEM is unique!

DRYWALL SYSTEM provides the latest generation, ready-to-use putty for jointing drywall. Dedicated strictly to drywall joints. It has been reinforced with fibers with a fibrillated structure. The product has the consistency of a white paste. Thanks to the use of appropriate minerals, it provides high technical and functional properties. It is characterized by high flexibility and strength, ensuring the durability of connections. It gives a perfect finishing results - perfectly smooth walls and ceilings.

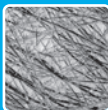
REMEMBER! Reinforcement the putty with tape is not required in the case of realization of STEP 2. The use of the Drywall Leveling Kit determines the ideal distance between the edges of the two boards of 2-3 mm. This space is perfect for our Putty – in such a joint it will not crack after curing.

Easy and perfect joint filling in drywall works? Now it is possible. **STEP 3 – FILLING**

MAIN BENEFITS OF THE JOINT FILLING PUTTY FOR DRYWALL



**READY
TO USE**



**MICROFIBERS
INSIDE**



NO CRACKS

STEP ③ OF 4 - FILLING

FAST & EASY FILLING PROCESS



1
Prepare the product in accordance with the requirements



*TIP: for better adhesion
always use one of the
Tytan Professional primers*



2
Apply the primer on the cleaned and prepared surface



3
The product is ready to use, take it straight from the bucket and apply



4
The product has an excellent consistency and is additionally reinforced with microfibers - it will perfectly fill and strengthen the joint with the width determined by the clips



5
If additional reinforcement is needed, drywall tapes can be used over the joint filling putty

STEP ④ FINISHING



DRYWALL ACRYLIC



We are at the finish!

There is only one last step ahead of us and we will be able to enjoy a perfectly even, fully finished surface.

Drywall Acrylic is designed for filling corners and all places where two boards connect to each other on two different walls. This acrylic is a perfect complement to the Joint Filling Putty from STEP 3. **It does not crack, shrink and can be painted over!**

REMEMBER: dry construction, just like the entire building, is subject to high tensile forces. Therefore, it is important that the joint is **highly flexible** and does not crack. Acrylic dedicated to the DRYWALL SYSTEM is **twice as flexible than a standard acrylic** available on the market.

If that's not enough: you can apply it even on moist surfaces, it is odorless and resistant to UV radiation.

Ready for the final straight? **STEP 4 - FINISHING**

MAIN BENEFITS OF THE DRYWALL ACRYLIC



HIGH
FLEXIBILITY



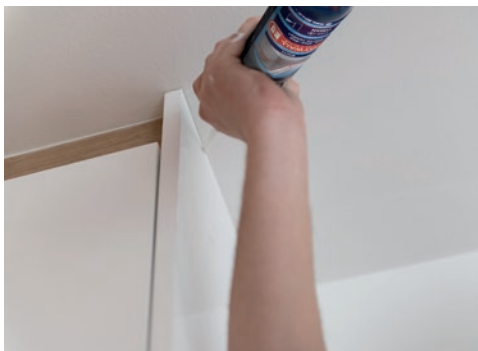
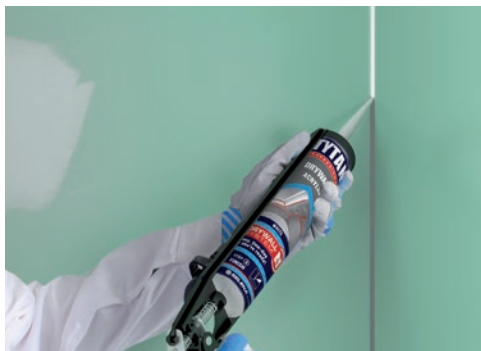
PERFECT
FOR CORNERS



NO CRACKS

STEP ④ OF 4 - FINISHING

FAST & EASY FINISHING PROCESS



DRYWALL ACRYLIC.

For corners of the walls always use acrylic sealant specially dedicated for drywall.

Thanks to its formula, it perfectly deadens any vibrations of the wall.

TYTAN PROFESSIONAL DRYWALL SYSTEM vs STANDARD SOLUTIONS

TYTAN PROFESSIONAL DRYWALL SYSTEM

SOLUTIONS ON THE MARKET



SPEED OF WORK



1-DAY READY

48-72
HOURS

EASE OF WORK



VERY EASY!

REQUIRES SKILL, EXPERIENCE
AND PATIENCE

PRECISION



PROVIDES A PERFECTLY
EVEN SURFACE

REQUIRES HIGH FOCUS AND
PRECISION IN APPLICATION

COMPLEMENTARITY OF PRODUCTS

ALL PRODUCTS UNDER ONE BRAND

YOU MUST SELECT PRODUCTS FROM
DIFFERENT PRODUCERS

CONVENIENCE OF WORK



TRANSPORTATION

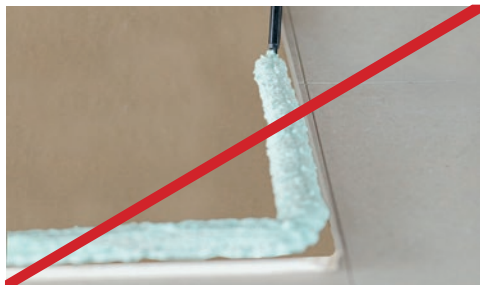


ADDITIONAL UTILITIES



ELECTRICITY, WATER AND MIXER
ARE A MUST

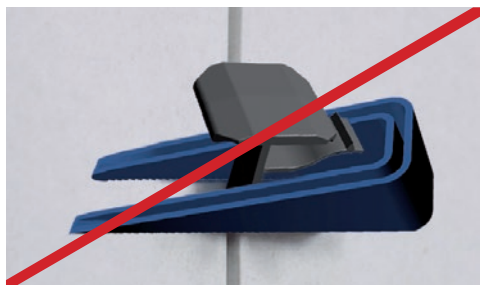
FREQUENT AND COMMON MISTAKES AND HOW TO AVOID THEM



Product application too close to the edge of the board



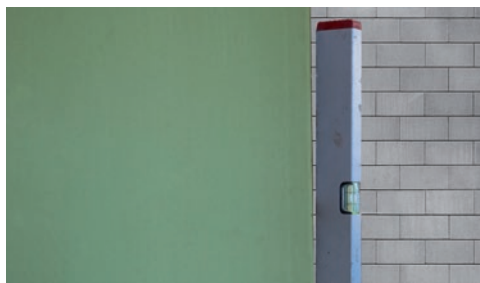
If it is necessary to tear the board off the surface (by pulling it towards you), apply the foam adhesive again, because the previous layer of the product cannot be reused



Insert the wedge from the armless side of the clip only (exactly as shown in picture no. 10 in the Leveling section, page 16)



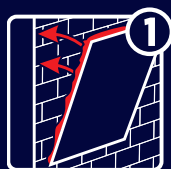
Before bonding the drywall, do not forget to put a piece of a board on the bottom of the wall to create a space between the board and the floor



The first board should be set very precisely using the long spirit level. The level of the first board is very important because later Drywall Leveling Kit (clips and wedges) will position the boards vertically in relation to the first one



Remember to shake the can firmly for about 30 seconds. All ingredients and gas must be well mixed, only in this case the product will provide maximum efficiency. If the can is not shaken well, the performance of the foam adhesive may be not as expected

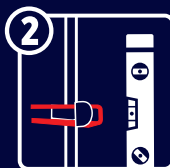


1 BOND

FOAM ADHESIVE
FOR DRYWALL

LEVEL

DRYWALL
POSITIONING
KIT



4 STEPS **IN 1 DAY** **AND READY!**



4 FINISH

DRYWALL
ACRYLIC

FILL

JOINT FILLING PUTTY
FOR DRYWALL

